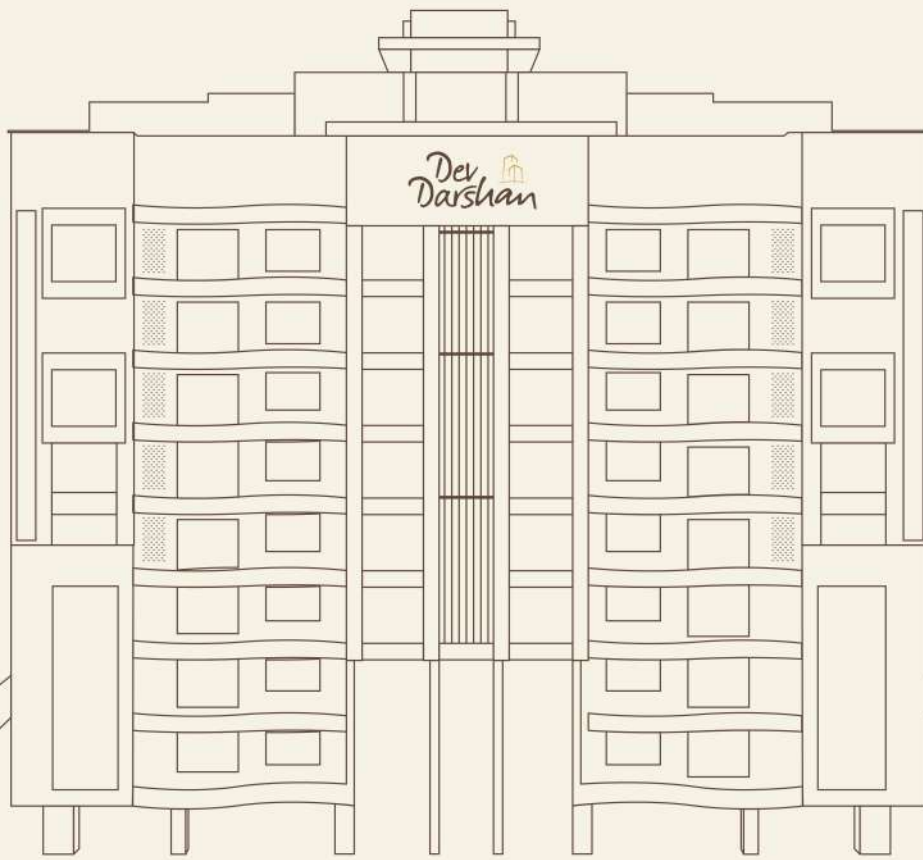


Dev Darshan

A Premium Residential Abode

2, 3, 4 BHK Luxury Apartments



Developed by:



Marketed by:



Dev 
Darshan

Flip through the gilded moments of
unrivalled exclusivity at Devdarshan,
bringing unparalleled *comfort*
and finest feeling of being at home.



Dev Darshan

Dev Darshan

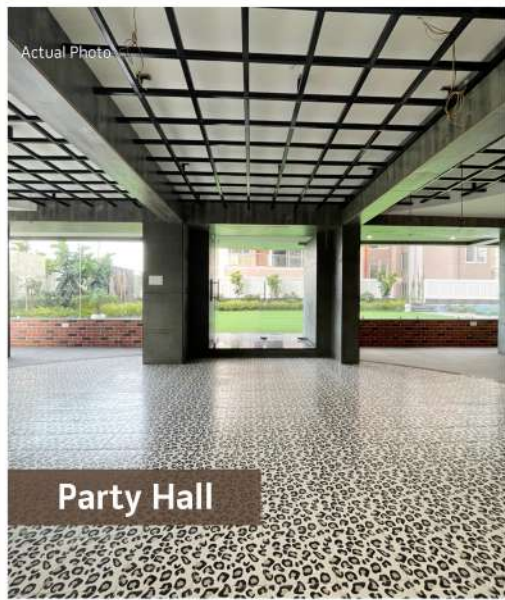
Actual Photo



Wake up in the arms of *luxury*
where you can experience the
pinnacle of comfort and opulence.

EXTRAVAGANT AMENITIES

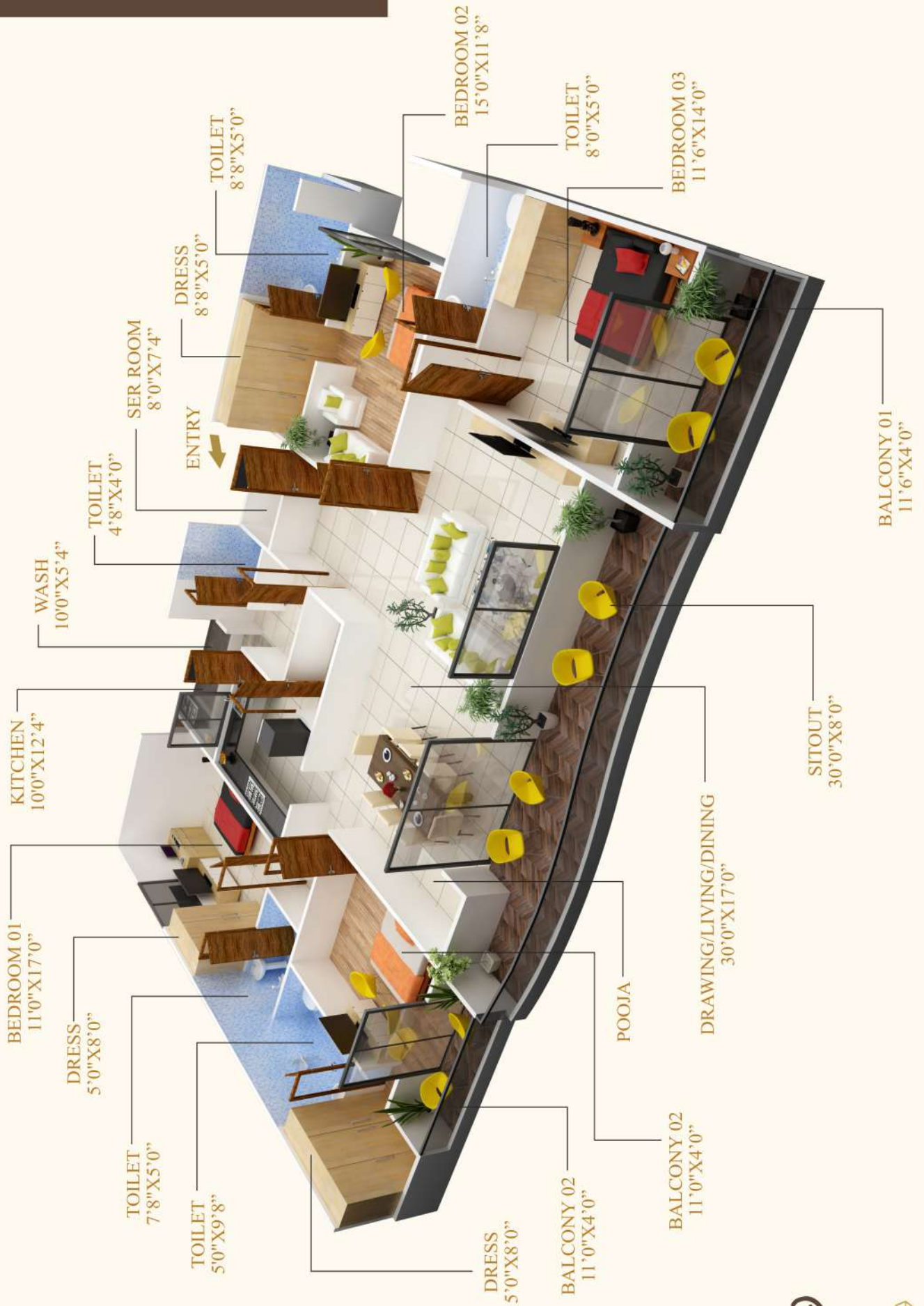
READY TO USE



DEV DARSHAN

Isometric View 4 BHK

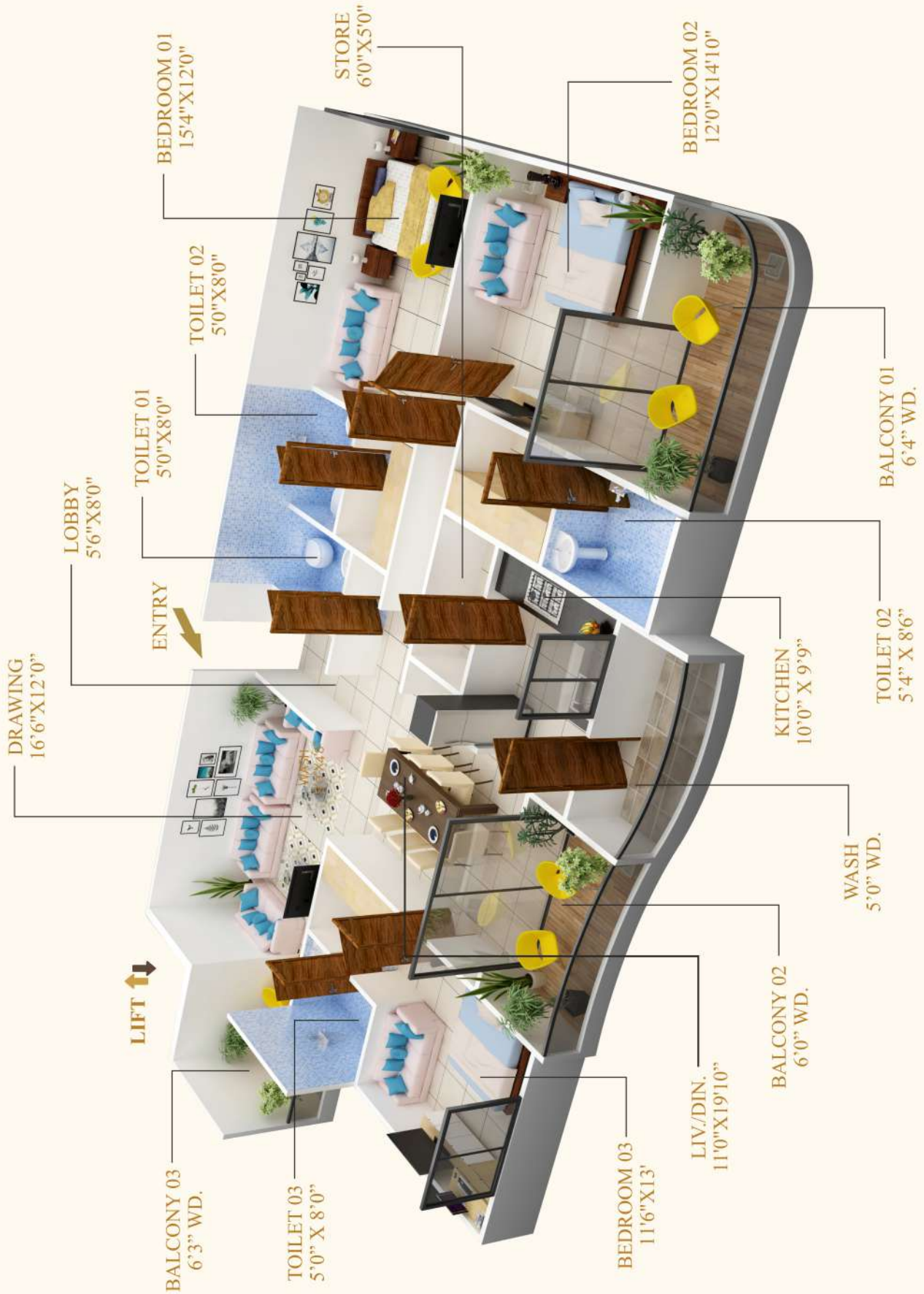
(with servant room)



S. Buildup Area **3477** sq.ft.

Isometric View 3 BHK

(with/without servant room)



S. Buildup Area **2622/2680/3062** sq.ft.

Isometric View 2 BHK



S. Buildup Area **1308** sq.ft.

PROJECT HIGHLIGHTS:

Features of construction:

- ✔ High Quality Building Materials In Construction
- ✔ Beautiful And Well Organized Modern Elevation
- ✔ Sturdy Earthquake Resistant Construction
- ✔ Each Flat Corner Flat

Common Amenities and features:

- ✔ Swimming Pool With Jacuzzi
- ✔ Well Equipped Banquet Hall
- ✔ Well Equipped Gymnasium With A Grade Equipment's
- ✔ 8 Feet Wide Well Ventilated Passage Lobby
- ✔ Seperate Steam Rooms
- ✔ Ample Parking
- ✔ Wide Roads To Reach The Block
- ✔ Well-organized And Wide Stairs
- ✔ Vastu Compliant
- ✔ 2 High Speed Elevators In Each Block With A Capacity Of 8 Persons (schindler)
- ✔ Power Backup For Common Area, Lobby And Lift
- ✔ Podium Garden
- ✔ Play Zone For Kids With Sand Pit
- ✔ Landscape And Greenery All Around

Continually useful facilities inside:

- ✔ Si Modular Switches & Copper Wiring
- ✔ Vitrified Tiles Of Branded Companies
- ✔ ISI. Kohler Company's Faucet Fittings With Diverter
- ✔ Concealed Tape (with Underground CPVC Pipe)
- ✔ High Quality Sanitary By Kohler
- ✔ 7 Ft Designer Tiles In The Bathroom
- ✔ Electric Point Separate For Mixer, Fridge, Juicer In The Kitchen
- ✔ Steel Sink In The Kitchen
- ✔ Granite Platform In The Kitchen

Security:

- ✔ Secured Covered Campus
- ✔ CCTV Surveillance
- ✔ 24-hour Security Guards
- ✔ UPVC Windows
- ✔ Fire Fitting System As Per Norms
- ✔ Intercom Facility In All Flats

GROUND FLOOR LAYOUT





	PASSPORT OFFICE	1 K.M.
	AGARWAL PUBLIC SCHOOL	1 K.M.
	HOSPITAL	1 K.M.
	AIRPORT	15 K.M.
	RAILWAY	6.7 K.M.
	MALL	1.5 K.M.

Dev Darshan

A Premium Residential Abode

Bicholi Mardana, Nr Snow City, Nr Sch 140, Bypass, Opp. Sampat Fuels, Indore

88219-26000, 88219-27000

Developed by:



Marketed by:



ARK & COMPANY - DEVDARSHAN

TNCP	: 2256
Dated	: 15/03/18
Vikas Anumati	: 4413/IMC/Z19/W76/2018
Dated	: 28/09/18
Diversion No	: 14/A-/12.13
Dated	: 18/04/13
Prakoshth No	: MP179132021A11091710
Rera Ref ID	: 155651955380

Disclaimer:

The amenities, specifications, facilities, surrounding infrastructure, stock images and features shown and/or mentioned and the image renders used herein are purely indicative and for representational purposes and may differ from the actuals. All data and information set forth on this website regarding real property, for sale, purchase, rental and/or financing, are from sources regarded as reliable.